



# ***MCC 7500 IP Dispatch Console***

For ASTRO<sup>®</sup> 25 Trunking Systems



**MCC 7500 Console is specifically designed for Mission Critical**



## The Motorola MCC 7500 Dispatch IP Console

Seamlessly integrated into ASTRO 25 Trunking networks, the MCC7500 Console provides interoperability, cost, savings, and security advantages for today's critical communication needs. MCC 7500 consoles connect directly to the IP network without interface boxes, digital voice gateways, or backroom electronics for an integrated mission critical network. Conventional channels link to the IP network and use the same audio transport as trunked audio.



### Integrated With ASTRO®25 Networks

Motorola IP systems are optimized to perform to robust customer specifications for Mission Critical voice and data communications. ASTRO 25 complies with Project 25 interoperability specifications while network interfaces based on standard IP bring additional value to the network. MCC5500 IP Console provides:

- Emergency calls prioritized to get through no matter how busy the network.
- Voice quality and intelligibility is optimized to eliminate clipped or degraded audio.
- High quality audio maintained despite increasing traffic loads.
- Calls set up in a fraction of a second, regardless of the size of the system.
- Voice messages consistently delivered in the shortest possible times.
- Call traffic quickly re-routed in the event of an IP network path failure, minimizing lost audio and any impact on the end user.
- Dispatch performance enhanced and bandwidth efficiency improved by using IP multicast technology.
- Conventional channels link to the IP network using the same audio transport as trunked audio.

Meets your demand to

# Mission Critical IP communication.

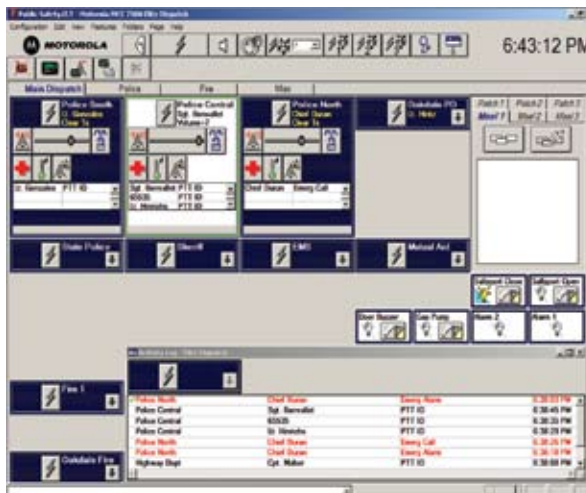


**True End to End Encryption** from the radio all the way through the console position. The MCC 7500 Dispatch Console goes beyond vocoded audio and uses true encryption technology, the only reliable means to keep your critical communication secure. Each MCC 7500 console supports up to 4 encryption algorithms simultaneously.

With **Agency Partitioning**, departments or agencies can share a system for cost savings and interoperability, yet manage and maintain control over their own resources, such as talk-groups, encryption keys, and configuration data.

**Centralized Network Configuration and Fault Management** dispatch positions allow changes to be automatically distributed throughout the system, providing vital efficiency. Access to the network manager from multiple remote locations via standard IP methods means users can still have convenient access while enjoying the benefits of centralized management.

**Enhanced, Integrated Logging Recorder** is available for the MC 5500 Console providing digital recorded audio at the same high quality level as heard through the dispatch positions. Digital recorders integrated into the radio system reap the benefits of agency partitioning, centralized management and network security, meeting a wide range of ASTRO 25 customer requirements.



### Customer Accepted Interface

Efficient, easy to use and intuitive, having been refined and proven through years of use in public safety dispatch centers around the world.

protect, prevent and respond to Mission Critical operations.

# MCC 7500 Console

## Command and Control Solutions Designed Around You

The MCC 7500 IP Dispatch Console is part of Motorola's extensive portfolio of communications and information solutions designed to address mission-critical public safety and security requirements worldwide. The MCC 7500 dispatch solution meets Motorola's rigorous quality standards to bring you the peace of mind you need in an emergency operation.

- Compatible with existing ASTRO 25 Trunking systems with forward migration to protect and leverage your investment.
- Software-based upgrades ease system and feature expansion. Re-use of the Elite Graphical User Interface (GUI) helps minimize dispatcher training.
- Works together with CENTRACOM® Elite console providing robust feature interaction.
- Installation is simplified and site costs are reduced since the console operator position functions without backroom electronics.
- Console configuration is performed at a centralized Network Manager client, with changes distributed automatically, saving valuable technician and administrator time.
- More robust service logs, containing real-time information, facilitate maintenance activities.
- Integration into the system's central fault standard event monitoring protocols, means fewer site visits.
- Flexible bandwidth requirements minimize operating costs for all remote console locations.
- Conventional audio is transported by the same IP network, eliminating the need for channel banks or a separate circuit switch network.

## MOTOA4 Portfolio

The MCC 7500 IP Dispatch console operates within an ASTRO 25 network and is part of the MOTOA4 Mission Critical portfolio of products — offering seamless connectivity between the officer in the field and the dispatcher. The MCC 7500 puts real-time information in the hands of public safety personnel providing better information for better decisions. *It's technology that's second nature™.*



**MOTOROLA**

**Motorola, Inc.**  
1301 East Algonquin Road  
Schaumburg, IL 60196 U.S.A.  
800-367-2346  
[www.motorola.com/publicsafety](http://www.motorola.com/publicsafety)

MOTOROLA and the Stylized M Logo are registered in the U.S. Patent and Trademark Office.  
All other product or service names are the property of their respective owners. © Motorola, Inc. 2008 RC-13-2020A