



OmniExpress®

Mobile Communications Solution

Efficiency, Security, and Mobility in One Solution

The OmniExpress solution is designed expressly for carrier fleets and construction equipment companies that operate in metropolitan areas and main highway corridors. Since the focus is on heavy-traffic routes and metropolitan areas, the OmniExpress solution is an effective way to reduce operating costs while increasing the productivity and security of drivers, vehicles, equipment, and cargo. With automatic GPS tracking, two-way messaging, and seamless integration with back-office applications, the OmniExpress solution delivers key benefits to cost-conscious organizations.



Cost-effective mobile communications for metropolitan areas and major highways

Benefits

- ▶ Helps reduce operating costs
- ▶ Improves workforce productivity
- ▶ Allows quicker response times to changing situations
- ▶ Increases security of trucks and service vehicles
- ▶ Provides more efficient customer service



Standard Features

- ▶ Automatic GPS vehicle tracking
 - ▶ Two-way, text-based communication
 - ▶ Store-and-forward messaging reliability
 - ▶ Seamless data integration with back-office applications such as dispatch, routing, and accounting systems as well as the GlobalTRACS® equipment management solution
- ▶ AS/400 server, Windows server, or Web-hosted operation
 - ▶ Reliable message delivery
 - ▶ Utilizes one of the nation's largest cellular networks
 - ▶ On-board terrestrial communications unit (TCU)
 - ▶ Roof-mounted dual-band antenna
 - ▶ QUALCOMM Network Operations Centers (NOCs)

Reliable Contact for Dispatchers, Drivers, and Service Technicians

The OmniExpress solution delivers two-way data transactions connecting dispatchers, drivers, and maintenance personnel with vital information. Starting with coverage from one of the nation's largest cellular networks, QUALCOMM adds the wireless know-how that makes it a leader in mobile data. Store-and-forward messaging ensures that information gets through regardless of changes in network status. Message screens are clear and easy to use for drivers and service technicians, and the OmniExpress solution enables dispatchers and back-office staff to quickly respond to last-minute opportunities, route changes, and on-the-road emergencies.

Behind the scenes, QUALCOMM's Customer Service group provides nonstop support to keep you up and running. In short, the OmniExpress solution enables companies to keep in touch with their mobile resources while maximizing their efficiency.



A Total Approach to Risk Reduction and Driver Safety

With a powerful combination of alerts, GPS monitoring, and communications capabilities, the OmniExpress solution brings a new dimension to security and safety for mobile resources and their operators. GPS tracking follows the movement of your trucks and/or equipment, and can help assist authorities for a faster recovery if vehicles are stolen. In addition, wireless and in-dash panic buttons are available for drivers to request assistance in emergency situations. From front to back, the OmniExpress solution has it covered.

GPS Tracking and Maps for Smarter Deployment

In conjunction with security, GPS tracking enables smarter deployment as dispatchers monitor the position of vehicles and equipment at a glance. Easy-to-read maps display both geographical coordinates and nearby landmarks, making it easy for the home office to pinpoint vehicle locations. Color coding enables users to distinguish different groups of vehicles along with their load status, which eliminates unnecessary confusion. Transportation companies are able to simply manage any last-minute route changes, while construction equipment companies can optimize their service fleets. Vehicles remain productive for longer periods because less time is wasted, and thus customer service improves.

User-interface Options

Optional Features

- ▶ Driver authentication (with MVPc computer)
- ▶ Wireless and/or in-dash panic button for increased driver safety
- ▶ QUALCOMM Professional Services support for customized features

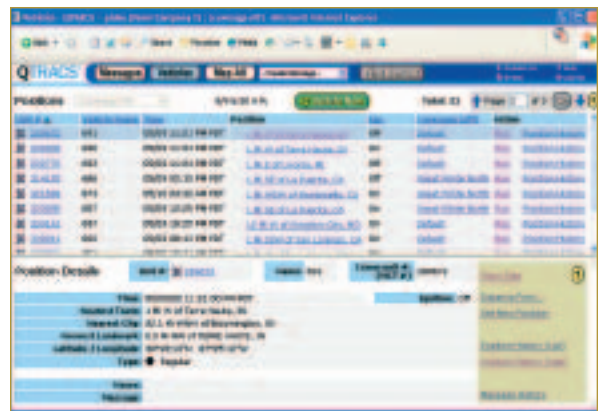
- ▶ Enhanced display unit (EDU) featuring a 40-character wide by 15-line deep display area
- ▶ MVPc computer with Windows® CE operating system
- ▶ Third-party, handheld device capability

Seamless Integration with Back-Office Applications

The OmniExpress solution does more than collect raw data. It seamlessly integrates and shares that data with a variety of back-office applications—funneling critical information to route planning and dispatch, maintenance, diagnostic, and accounting applications. With all these possibilities, the OmniExpress solution opens up a world of dynamic fleet and service-vehicle management. For example, it offers a choice of driver interfaces including the enhanced display unit (EDU) or the MVPc® on-board computer, and also has the capability to be used in conjunction with third-party handheld devices.

Maximum Installation Flexibility

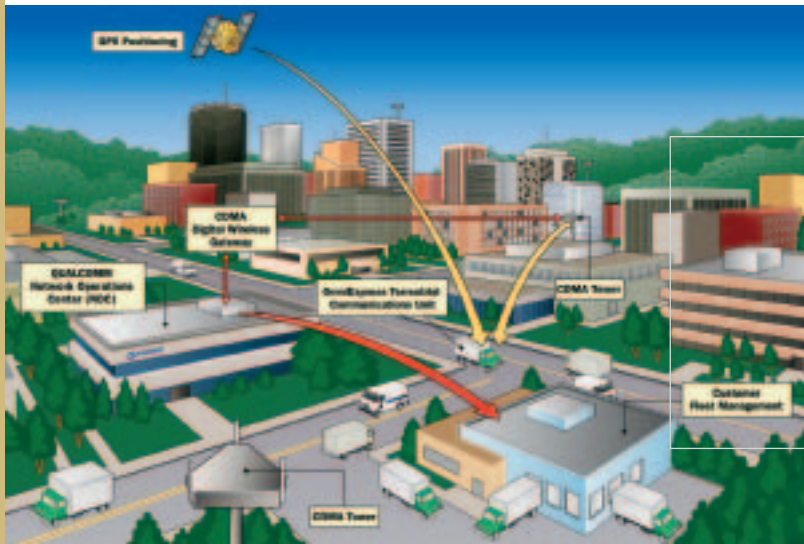
The OmniExpress solution operates equally well as a server-based or Web-based system. For companies that prefer server-based operation, the OmniExpress solution installs on the AS/400 or on Windows servers to integrate data with back-office applications. Alternatively, Internet-based systems support access to these same applications through a standard browser—featuring a simplified setup, multiple-user access, and macro-editing. Either way, the OmniExpress solution shares data with your back-office operations and can bring immediate value to your business.



Message screens display the time and date of received messages, and provide return-receipt confirmation. Messages can be freeform or have fill-in-the-blank formatting.



Maps feature zoom-in capabilities and color-coding of vehicles to distinguish vehicle groupings or current load status.



To Vehicles: Customers transmit messages to QUALCOMM's Network Operations Centers (NOCs) by landline. The NOC sends messages to vehicles using the wireless network.

From Vehicles: Vehicles use the wireless network to send text messages and satellite-based GPS information to the NOC, where it is forwarded to the customer.

OmniExpress Hardware Specifications

Terrestrial Communications Unit (TCU)

External Dimensions	8.75"h x 7.5"w x 1.25"d
Weight	1.75 lb

Display Unit

External Dimensions	12.5"h x 9.3"w x 2.2"d
Weight	3 lb
Miscellaneous	Text and graphical display capabilities; 15-line by 40-character screen; single-piece membrane spill-proof keyboard; backlit keys

QUALCOMM: Building Solutions that Work for You

As one of the world's largest mobile data providers, QUALCOMM offers products and services that have revolutionized the transportation and logistics industry with more than 500,000 mobile units shipped around the world. Processing over 9 million data transactions daily, our world-class Network Operations Centers (NOCs) are staffed by trained professionals 24 hours a day/365 days a year. QUALCOMM is committed to creating solutions that work for you. Let us show you how the OmniExpress solution can help you improve your business processes.

For more information

Visit www.qualcomm.com/qwbs or call us at 1-800-348-7227.

WIRELESS SOLUTIONS BY QUALCOMM

